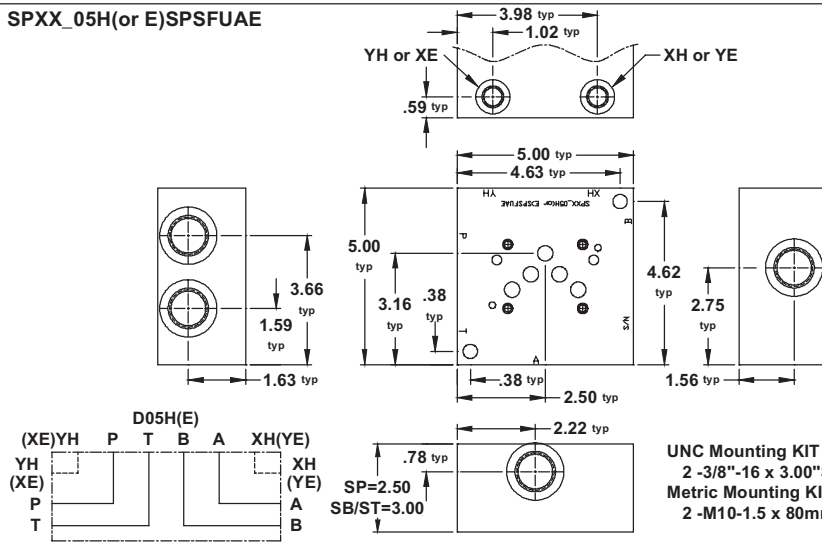


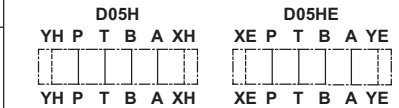
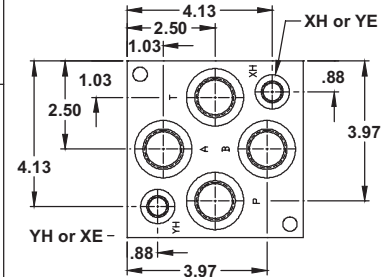
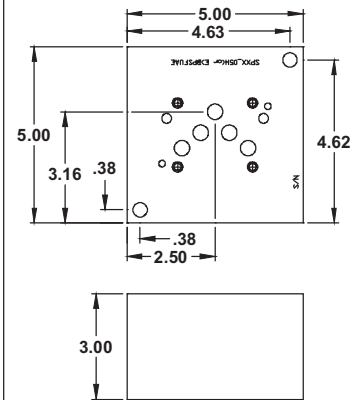
D05H(E) Subplate - Nominal 3/4"

SPXX_05H(or E)SPSFUAE



UNC Mounting KIT includes:
2 -3/8"-16 x 3.00"SHCS
Metric Mounting KIT includes:
2 -M10-1.5 x 80mm SHCS

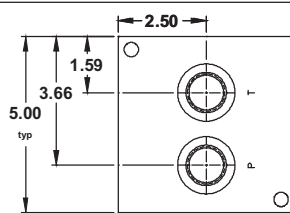
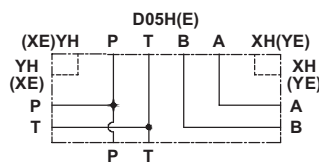
SPXX_05H(or E)BPSFUAE



UNC Mounting KIT includes:
2 -3/8"-16 x 3.50"SHCS
Metric Mounting KIT includes:
2 -M10-1.5 x 90mm SHCS

BOTTOM VIEW

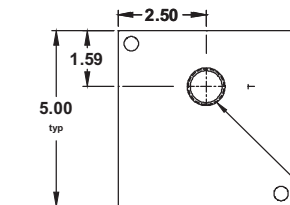
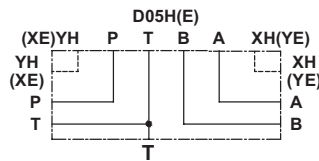
SPXX_05H(or E)SBSFUAE



UNC Mounting KIT includes:
2 -3/8"-16 x 3.50"SHCS
2 -Plugs
Metric Mounting KIT includes:
2 -M10-1.5 x 90mm SHCS
2 -Plugs

BOTTOM VIEW

SPXX_05H(or E)STSFUAE



UNC Mounting KIT includes:
2 -3/8"-16 x 3.50"SHCS
Metric Mounting KIT includes:
2 -M10-1.5 x 90mm SHCS

PART NUMBER SYSTEM

Aluminum D05H Side Ported Subplate with SAE 12 Ports & Pilot Ports Example: **SPXXA05HSPSFUAE**

TYPE	MATERIAL	VALVE PATTERN	PORTING STYLE	PORT CODE	MOUNTING THREADS & KIT	PILOT PORT OPTIONS																								
SPXX Subplate	A Aluminum D Ductile Iron	BP Bottom Ported Only SB Side Ported with Bottom P & T Ports SP Side Ported only ST Side Ported with 3/4" NPTF "T" Port on Bottom only			U UNC Std for D05 Valve 1/4"-20 UNC x .75 dp SAE & NPT Subplate 3/8"-16 SHCS M Metric Std for D05 Valve M6 x 1.00 x .75 dp BSP* & Metric Subplate M10 x 1.50 SHCS	AA* See Note Below AE X & Y Ports																								
05H (USA Standard) NFFA T3.5.1-D05 Alt B																														
05E ISO 4401-05-05 (EURO) NFFA T3.5.1-D05 Alt A																														
				<table border="1"> <thead> <tr> <th>CODE</th> <th>TYPE</th> <th>P, T, A and B</th> <th>X & Y</th> </tr> </thead> <tbody> <tr> <td>SF</td> <td>SAE</td> <td>12</td> <td>6</td> </tr> <tr> <td>NF</td> <td>NPTF</td> <td>3/4"</td> <td>1/4"</td> </tr> <tr> <td>BF</td> <td>BSPP</td> <td>3/4"</td> <td>1/4"</td> </tr> <tr> <td>TF</td> <td>BSPT</td> <td>3/4"</td> <td>1/4"</td> </tr> <tr> <td>MF</td> <td>METRIC</td> <td>M27</td> <td>M10</td> </tr> </tbody> </table>	CODE	TYPE	P, T, A and B	X & Y	SF	SAE	12	6	NF	NPTF	3/4"	1/4"	BF	BSPP	3/4"	1/4"	TF	BSPT	3/4"	1/4"	MF	METRIC	M27	M10		
CODE	TYPE	P, T, A and B	X & Y																											
SF	SAE	12	6																											
NF	NPTF	3/4"	1/4"																											
BF	BSPP	3/4"	1/4"																											
TF	BSPT	3/4"	1/4"																											
MF	METRIC	M27	M10																											

NOTE: * = NON-STANDARD OPTION
Use "05T" for Valve Pattern Code when Subplate with no Pilot Ports is required
Example: SPXXA05TSPSFUAA

WE RESERVE THE RIGHT TO DISCONTINUE MODELS, OR CHANGE SPECIFICATIONS WITHOUT NOTICE OR INCURRING OBLIGATION

Lynch Products Can Be Modified to Suit Your Application



NFFA
Solutions through motion technology
MEMBER



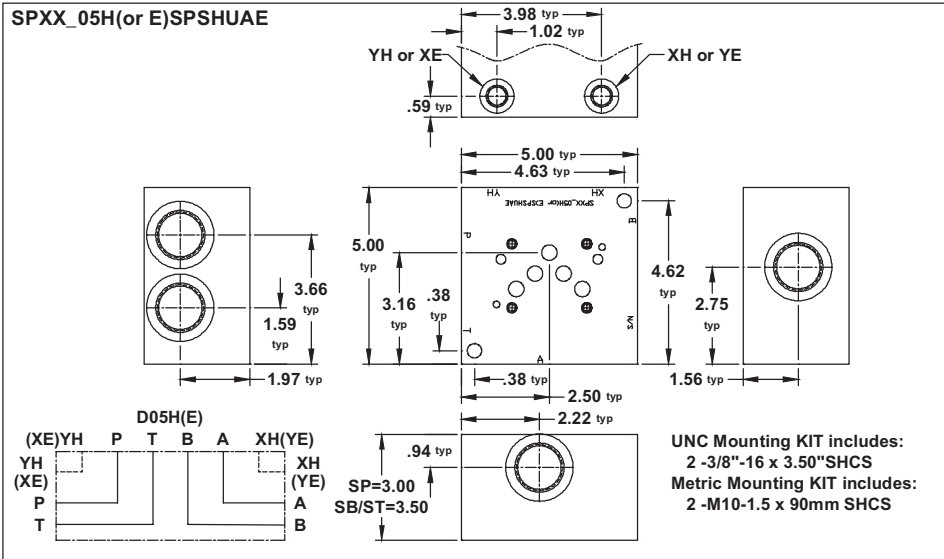
Lynch MANIFOLDS & VALVE PACKS

D05H(E) Subplate - Nominal 1"

4

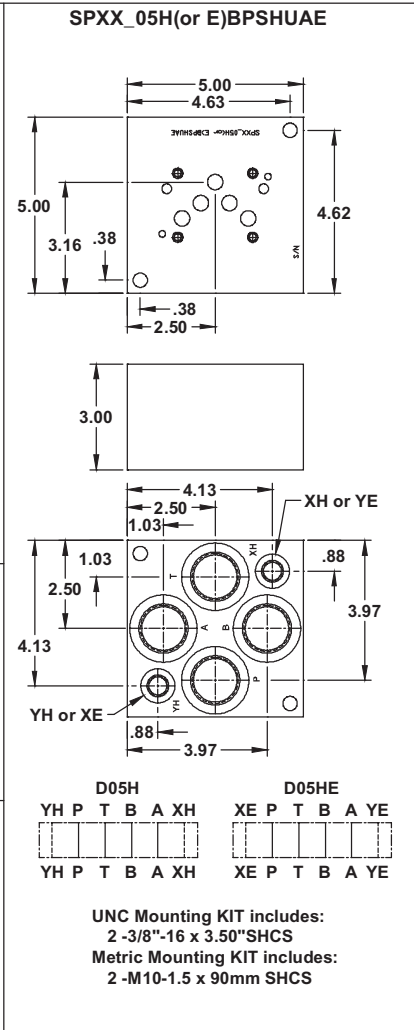
SUBPLATES

SPXX_05H(or E)SPSHUAE



UNC Mounting KIT includes:
2 -3/8"-16 x 3.50"SHCS
Metric Mounting KIT includes:
2 -M10-1.5 x 90mm SHCS

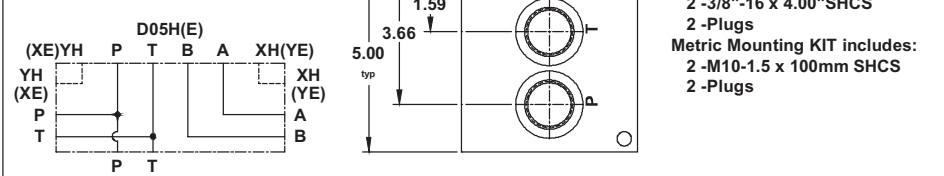
SPXX_05H(or E)BPSHUAE



UNC Mounting KIT includes:
2 -3/8"-16 x 4.00"SHCS
2 -Plugs
Metric Mounting KIT includes:
2 -M10-1.5 x 100mm SHCS
2 -Plugs

BOTTOM VIEW

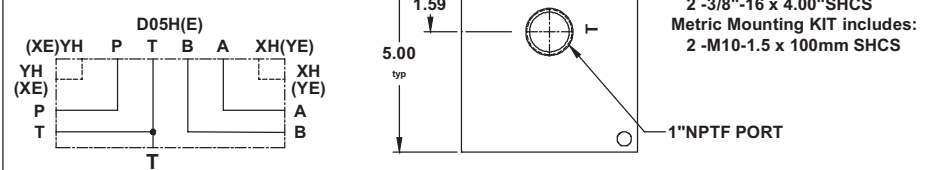
SPXX_05H(or E)SBSHUAE



UNC Mounting KIT includes:
2 -3/8"-16 x 4.00"SHCS
Metric Mounting KIT includes:
2 -M10-1.5 x 100mm SHCS

BOTTOM VIEW

SPXX_05H(or E)STSHUAE



UNC Mounting KIT includes:
2 -3/8"-16 x 3.50"SHCS
Metric Mounting KIT includes:
2 -M10-1.5 x 90mm SHCS

PART NUMBER SYSTEM

Aluminum D05H Side Ported Subplate with SAE 16 Ports & Pilot Ports Example: **SPXXA05HSPSHUAE**

TYPE	MATERIAL	VALVE PATTERN	PORTING STYLE	PORT CODE	MOUNTING THREADS & KIT	PILOT PORT OPTIONS
SPXX	Subplate					
	A Aluminum D Ductile Iron		BP Bottom Ported Only SB Side Ported with Bottom P & T Ports SP Side Ported only ST Side Ported with 1" NPTF "T" Port on Bottom only		U UNC Std for SAE & NPT M Metric Std for BSP* & Metric	AA* See Note Below AE X & Y Ports
	05H (USA Standard) NFPA T3.5.1-D05 Alt B 05E ISO 4401-05-05 (EURO) NFPA T3.5.1-D05 Alt A				D05 Valve 1/4"-20 UNC x .75 dp Subplate 3/8"-16 SHCS D05 Valve M6 x 1.00 x .75 dp Subplate M10 x 1.50 SHCS	
				CODE TYPE P, T, A and B X & Y SH SAE 16 6 NH NPTF 1" 1/4" BH BSPP 1" 1/4" TH BSPT 1" 1/4" MH METRIC M33 M10		

NOTE: * = NON-STANDARD OPTION
Use "05T" for Valve Pattern Code when Subplate with no Pilot Ports is required
Example: SPXXA05TSPSHUAA

WE RESERVE THE RIGHT TO DISCONTINUE MODELS, OR CHANGE SPECIFICATIONS WITHOUT NOTICE OR INCURRING OBLIGATION

Lynch Products Can Be Modified to Suit Your Application

